

FS-GLO insert compatible with Gloomhaven®



Assembly Instructions

FS-GLO

Notes:

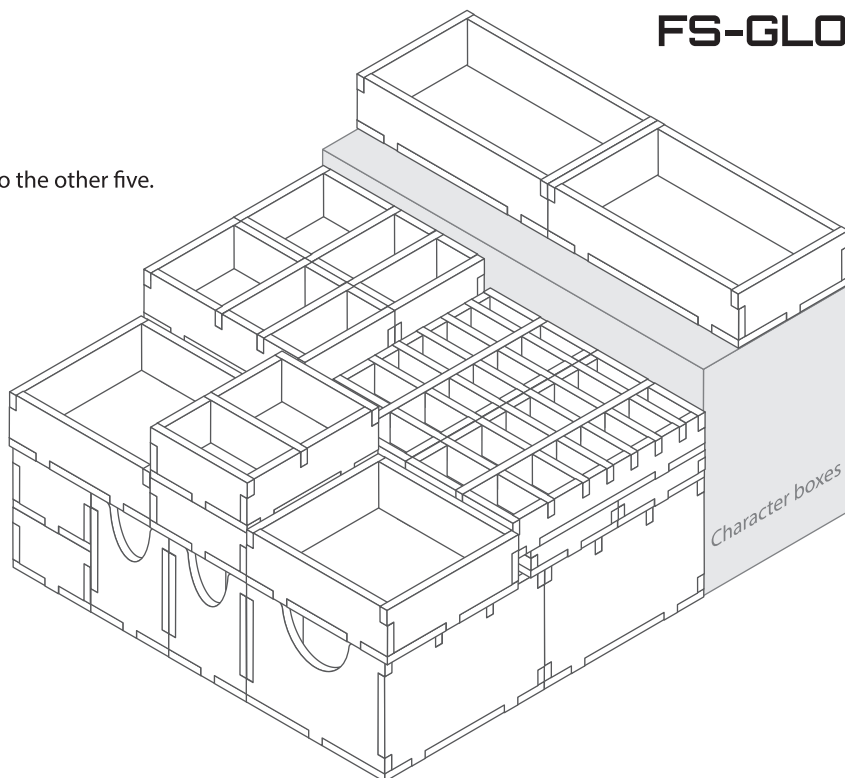
The package contains 10 sheets, five of them are identical to the other five.

Each tray is doubled.

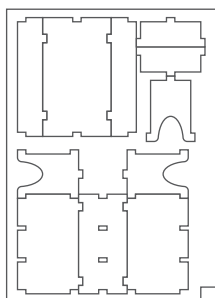
After assembly the trays are put in two layers in the original game box.

Ordinary PVA glue is required when assembling each tray, for extra strength.

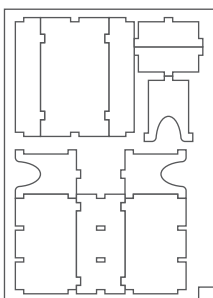
Please make sure you dry-assemble each tray correctly before gluing it together.



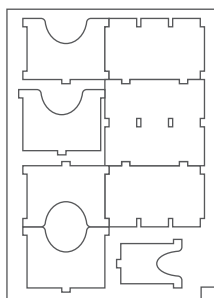
Sheet A1



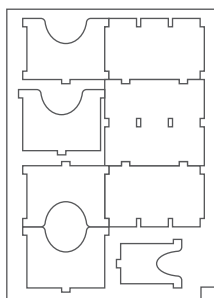
Sheet A2



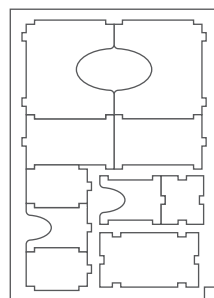
Sheet B1



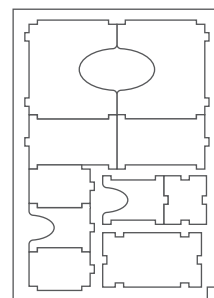
Sheet B2



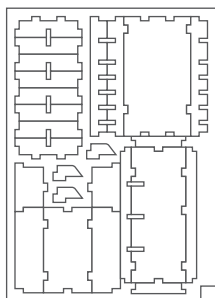
Sheet C1



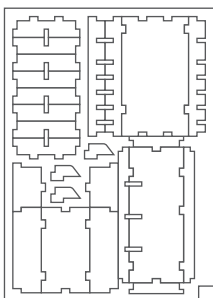
Sheet C2



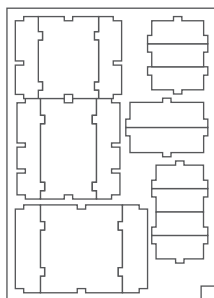
Sheet D1



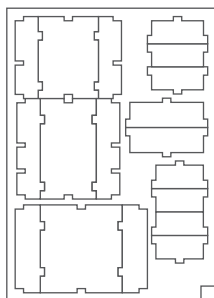
Sheet D2



Sheet E1

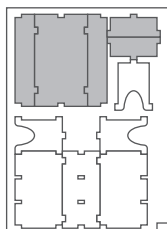


Sheet E2

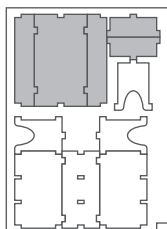


Tray 1a & 1b (the trays are identical)

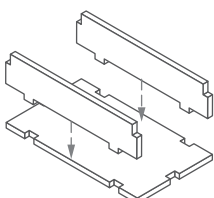
Sheet A1



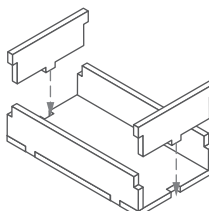
Sheet A2



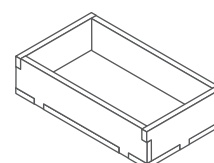
Step 1



Step 2



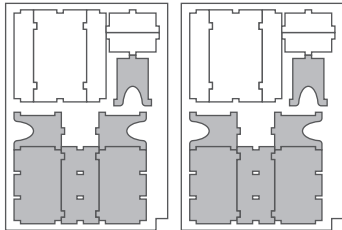
Finished tray



Tray 2a & 2b (the trays are identical)

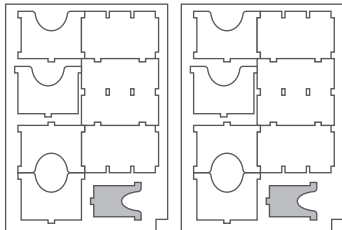
Sheet A1

Sheet A2

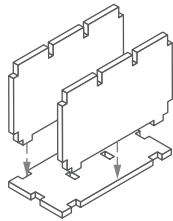


Sheet B1

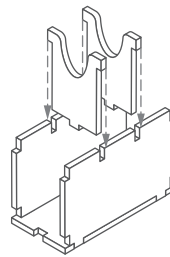
Sheet B2



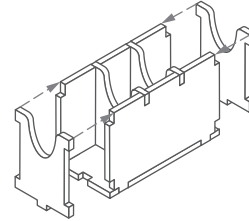
Step 1



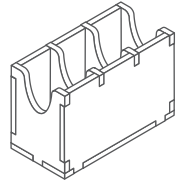
Step 2



Step 3



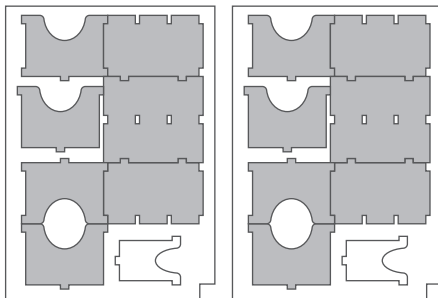
Finished tray



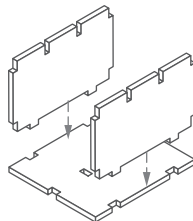
Tray 3a & 3b (the trays are identical)

Sheet B1

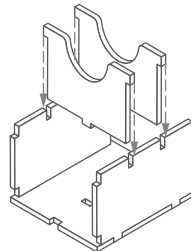
Sheet B2



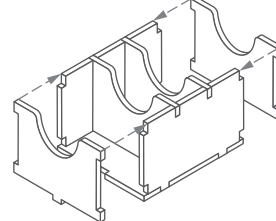
Step 1



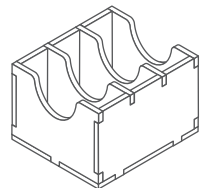
Step 2



Step 3



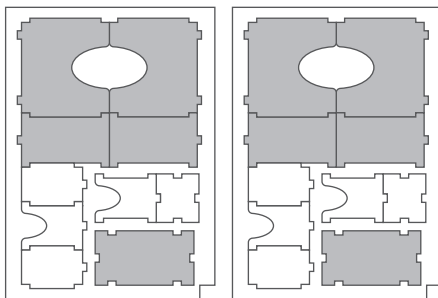
Finished tray



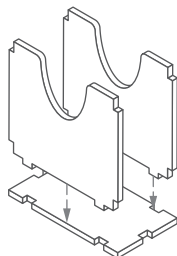
Tray 4a & 4b (the trays are identical)

Sheet C1

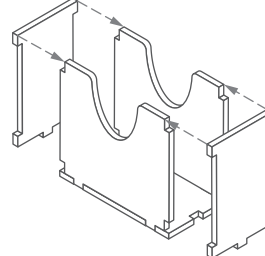
Sheet C2



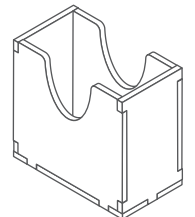
Step 1



Step 2



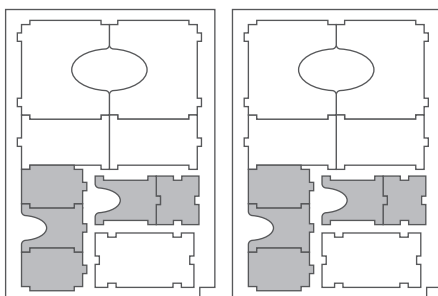
Finished tray



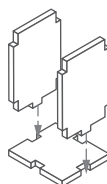
Tray 5a & 5b (the trays are identical)

Sheet C1

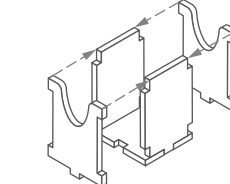
Sheet C2



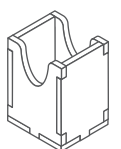
Step 1



Step 2



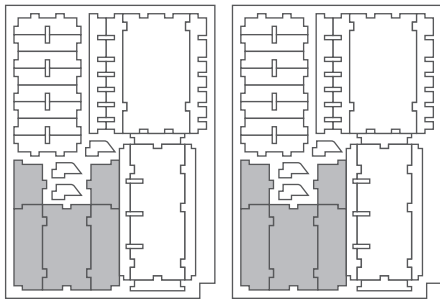
Finished tray



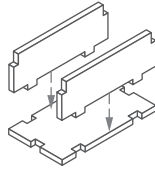
Tray 6a & 6b (the trays are identical)

Sheet D1

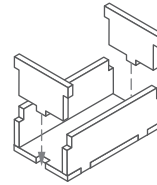
Sheet D2



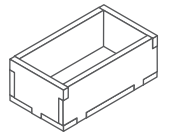
Step 1



Step 2



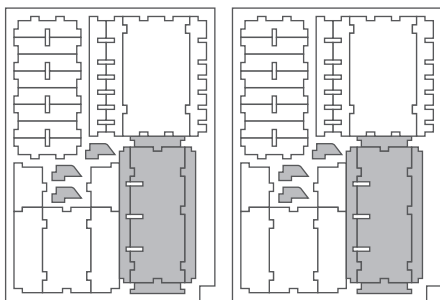
Finished tray



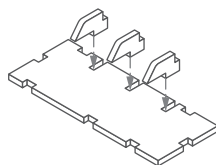
Tray 7a & 7b (the trays are identical)

Sheet D1

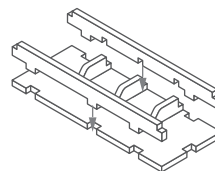
Sheet D2



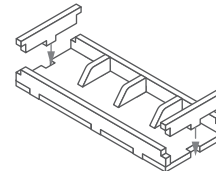
Step 1



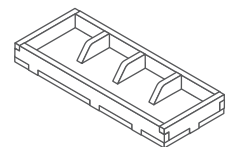
Step 2



Step 3



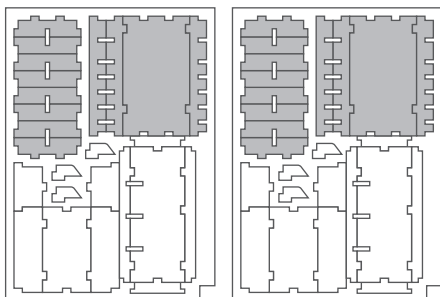
Finished tray



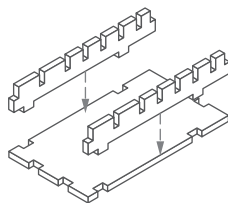
Tray 8a & 8b (the trays are identical)

Sheet D1

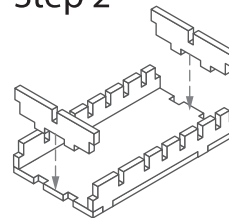
Sheet D2



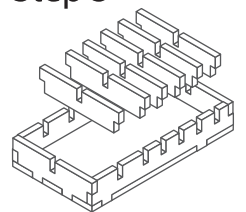
Step 1



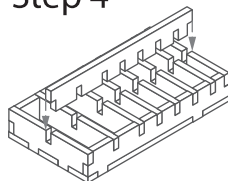
Step 2



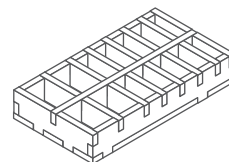
Step 3



Step 4



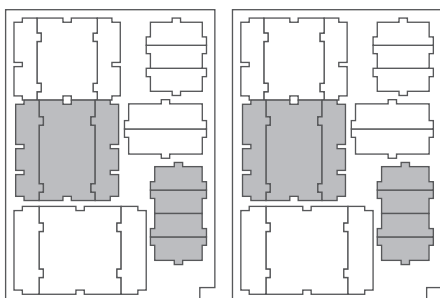
Finished tray



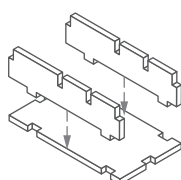
Tray 9a & 9b (the trays are identical)

Sheet E1

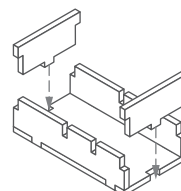
Sheet E2



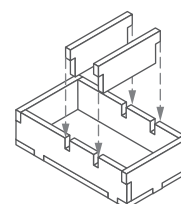
Step 1



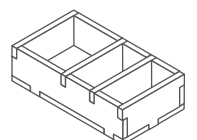
Step 2



Step 3



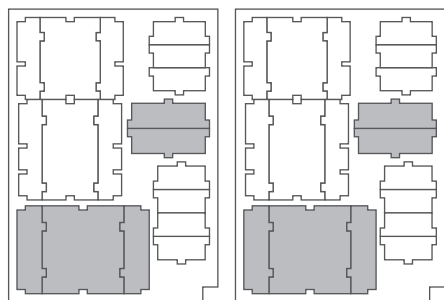
Finished tray



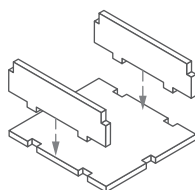
Tray 10a & 10b (the trays are identical)

Sheet E1

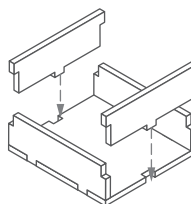
Sheet E2



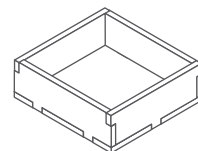
Step 1



Step 2



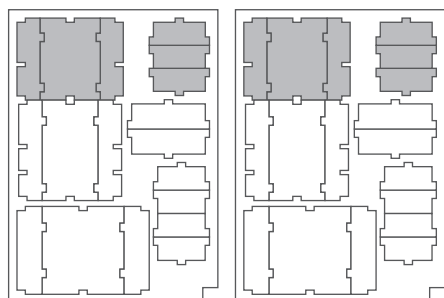
Finished tray



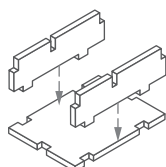
Tray 11a & 11b (the trays are identical)

Sheet E1

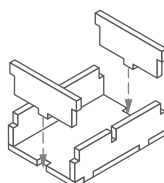
Sheet E2



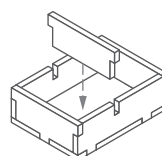
Step 1



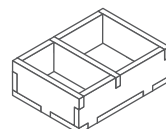
Step 2



Step 3

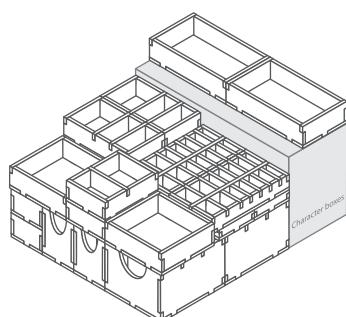
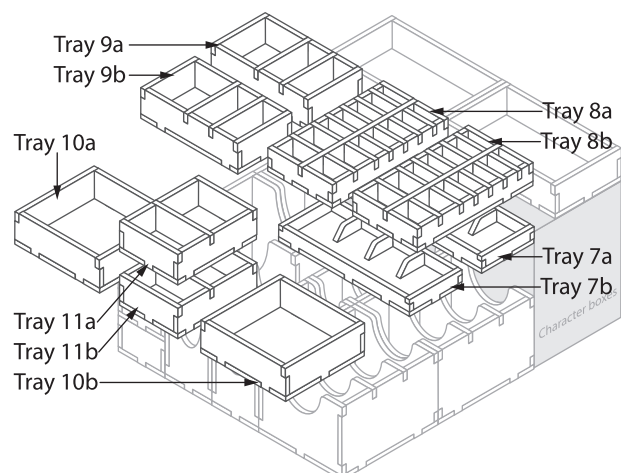
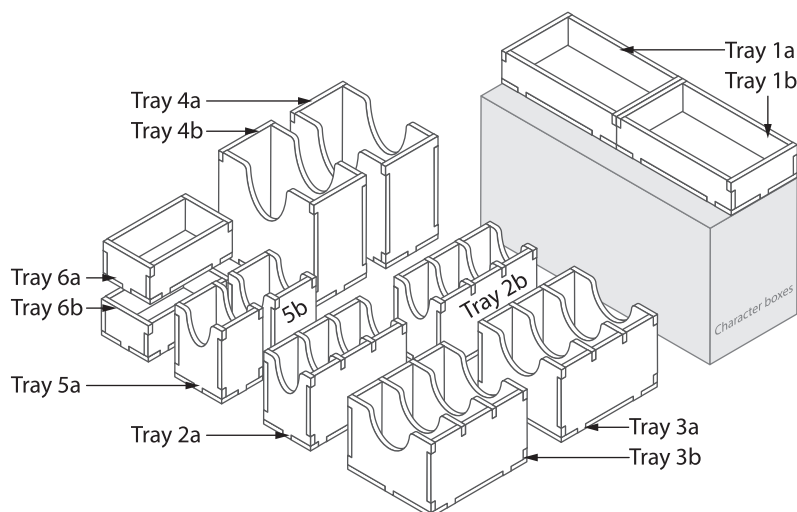


Finished tray



Tray legend:

- Tray 1a - hexagon overlays
- Tray 1b - hexagon overlays
- Tray 2a - small cards
- Tray 2b - small cards
- Tray 3a - large cards
- Tray 3b - large cards
- Tray 4a - monster cards
- Tray 4b - monster cards
- Tray 5a - small cards
- Tray 5b - small cards
- Tray 6a - stands
- Tray 6b - money
- Tray 7a - monster standees
- Tray 7b - monster standees
- Tray 8a - monster standees
- Tray 8b - monster standees
- Tray 9a - element discs, overlays, status tiles
- Tray 9b - objectives, overlays
- Tray 10a - character miniatures
- Tray 10b - character miniatures
- Tray 11a - summons, red overlays
- Tray 11b - damage, furniture



Please check www.foldedspace.net for photos of this insert in use.